

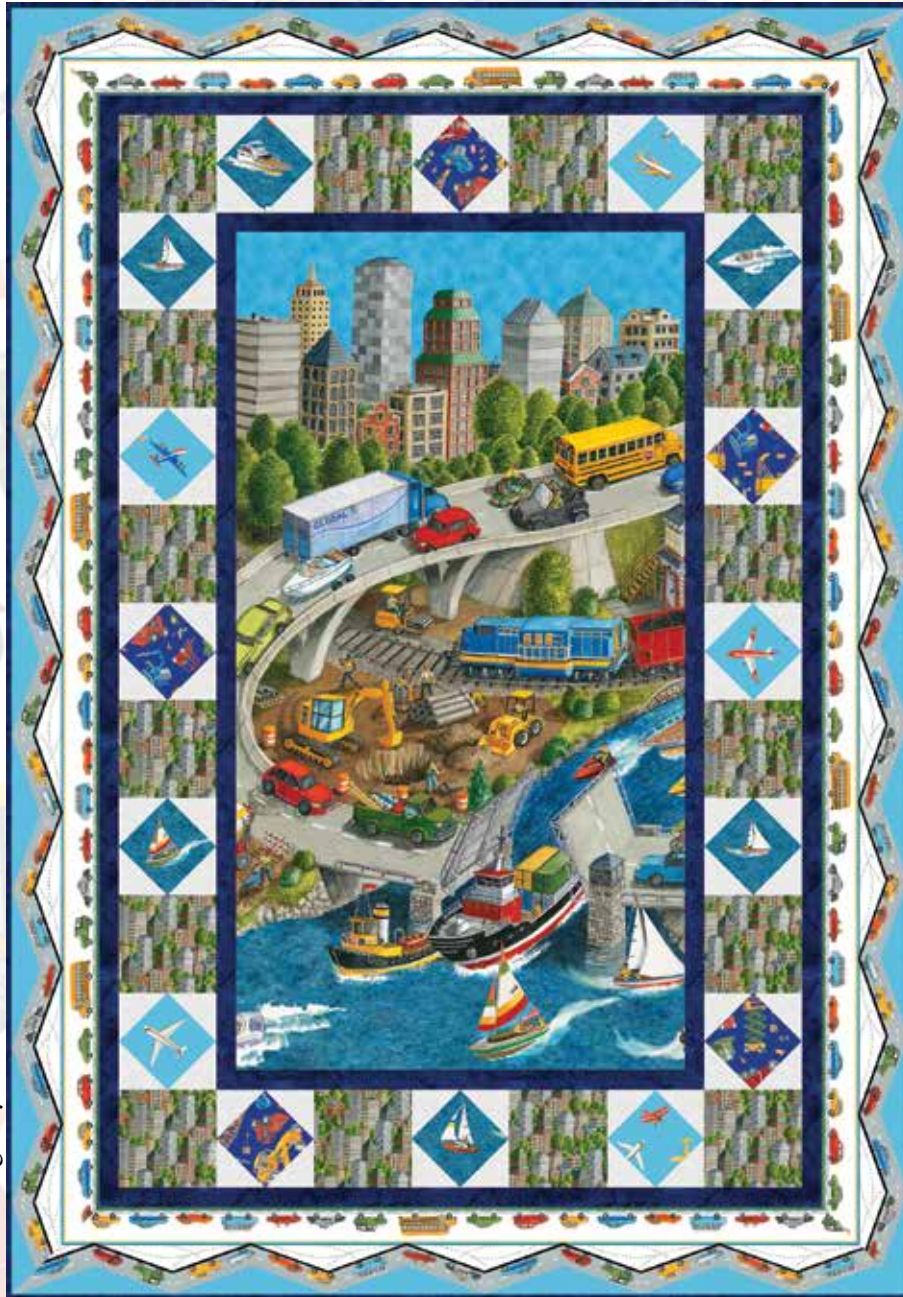
# Going Places

A Free Project Sheet  
NOT FOR RESALE

By Nutshell Designs

Quilt 1

Quilt Design by Heidi Pridemore



Skill Level: Advanced Beginner



facebook

Finished Quilt Size: 46" x 66"  
49 West 37th Street, 14th floor, New York, NY 10018  
Toll Free: 800-294-9495  
fax: 212-679-4578  
[www.blankquilting.net](http://www.blankquilting.net)

Please check our website for pattern updates before starting this project.

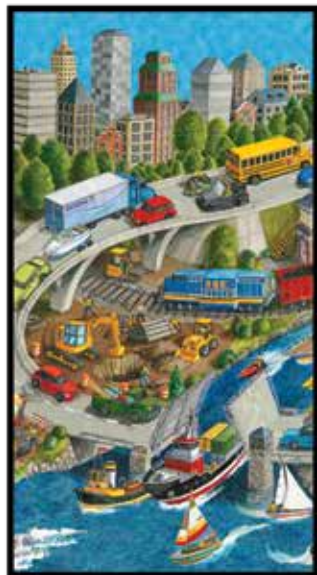


# GOING PLACES

Quilt 1

Finished Quilt Size: 46" x 66"

## Fabrics in the Going Places Collection



Panel - Blue  
9830P-77



Scenic Transportation - Blue  
9831-77



Blocks - Blue  
9832-77



Boats - Blue  
9833-77



Construction Vehicles - White  
9834-01



Construction Vehicles - Blue  
9834-77



Buildings - Gray  
9835-90



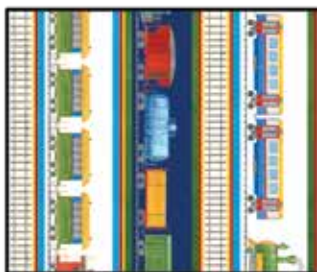
Cars - White  
9836-01



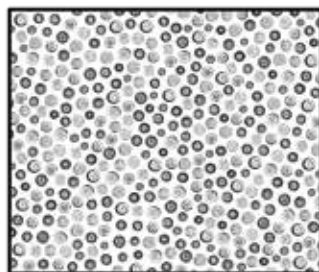
Airplanes - Light Blue  
9837-70



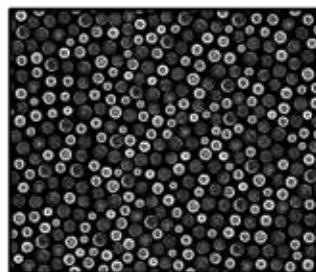
Car Stripe - Light Blue  
9838-70



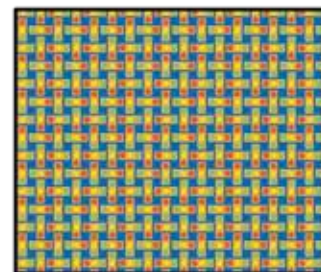
Train Stripe - White  
9839-01



Mini Tires - White  
9840-01



Mini Tires - Black  
9840-99



Traffic Light Geo - Yellow  
9841-44

## Select Fabrics from the Urban Legend and Starlet Collections



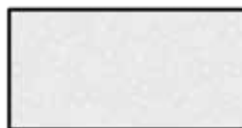
Urban Legend  
Chartreuse - 7101-60



Urban Legend  
Navy - 7101-77



Urban Legend  
Red - 7101-88



Starlet - White  
6383-White



Starlet - Yellow  
6383-Yellow

### Materials

1 panel	Panel - Blue (A)	9830P-77
1 1/8 yards	Urban Legend - Navy (B)	7107-77*
2/3 yard	Buildings - Gray (C)	9835-90
1/3 yard	Boats - Blue (D)	9833-77
1/3 yard	Construction Vehicles - Blue (E)	9834-77
1/3 yard	Airplanes - Light Blue (F)	9837-70
2 yards	Car Stripe - Light Blue (G)	9838-70
5/8 yard	Starlet - White (H)	6383-White
3 yards	Cars - White (Backing)	9836-01

\*Includes binding

### Cutting Instructions

Please note: all strips are cut across the width of fabric (WOF) from selvage to selvage edge unless otherwise noted.

#### From the Panel - Blue (A):

- Fussy cut (1) 23 1/2" x 43 1/2" strip.

#### From the Urban Legend - Navy (B), cut:

- (3) 2 1/2" x WOF strips. Sew the strips together end to end with diagonal seams and cut (2) 2 1/2" x 43 1/2" strips.
- (2) 2 1/2" x 27 1/2" WOF strips.
- (3) 1 1/2" x WOF strips. Sew the strips together end to end with diagonal seams and cut (2) 2 1/2" x 55 1/2" strips.
- (2) 1 1/2" x 37 1/2" WOF strips.
- (6) 2 1/2" x WOF strips for the binding.

#### From the Buildings - Gray (C), cut:

- (3) 5 1/2" x WOF strips. Sub-cut (16) 5 1/2" squares.

#### From the Boats - Blue (D):

- Fussy cut (6) 5 1/2" squares each centered on a boat.

#### From the Construction Vehicles - Blue (E):

- Fussy cut (5) 5 1/2" squares each centered on a construction vehicles.

#### From the Airplanes - Light Blue (F):

- Fussy cut (5) 5 1/2" squares each centered on an airplane.

#### From the Car Stripe - Light Blue (G), cut:

- (2) 5" x 70" Length of Fabric (LOF) strips.
- (2) 5" x 50" LOF strips.

#### From the Starlet - White (H), cut:

- (5) 3" x WOF strips. Sub-cut (64) 3" squares.

#### From the Cars - White (Backing), cut:

- (2) 54" x WOF strips for the backing. Sew the strips together and trim to make the 54" x 74" back.

### Block Assembly

Note: The arrows in figures denote fabric print direction.

Pay attention to the fabric direction and the orientation of the components when assembling the blocks.

- Sew (1) 2 1/2" x 43 1/2" Fabric B strip to each side of the 23 1/2" x 43 1/2" Fabric A panel. Sew (1) 2 1/2" x 27 1/2" Fabric B strip to the top and to the bottom of the Fabric A panel. Trim the block to measure 25 1/2" x 45 1/2" to make the Center Block (Fig. 1).

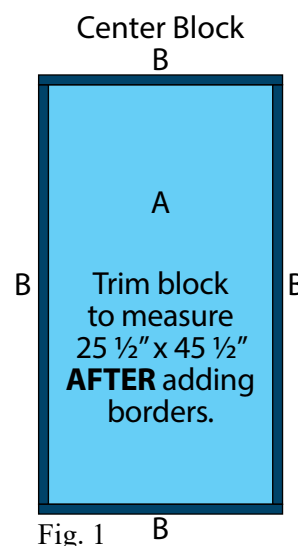


Fig. 1 B

- Place (1) 3" Fabric H square on the top left corner of 5 1/2" Fabric D square, right sides together (Fig. 2). Sew across the diagonal of the smaller square from the upper right corner to the lower left corner (Fig. 2). Trim away the excess fabric from behind the triangle 1/4" away from the sewn seam. Flip open the triangle formed and press (Fig. 3).

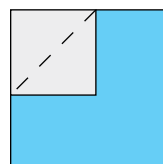


Fig. 2

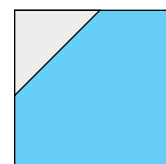


Fig. 3

- Follow Figure 4 for the seam direction to add a 3" Fabric H square to each of the remaining corners of the 5 1/2" Fabric D square to make (1) Unit 1 square (Fig. 5).

- Repeat Steps 2-3 to make (6) Unit 1 squares total.

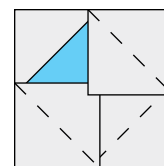


Fig. 4

Unit 1  
make 6

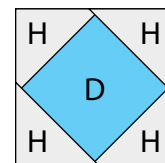


Fig. 5

Unit 2  
make 5

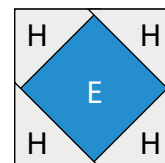


Fig. 6

Unit 3  
make 5

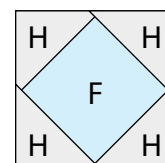


Fig. 7

- Repeat Steps 2-3 and refer to Figures 6-7 for fabric identification, placement and seam direction to make (5) Unit 2 squares and (5) Unit 3 squares.

6. Sew (1) Unit 1 square, (1) 5 1/2" Fabric C square, (1) Unit 3 square, (1) 5 1/2" Fabric C square, (1) Unit 2 square, (1) 5 1/2" Fabric C square, (1) Unit 1 square, (1) 5 1/2" Fabric C square and (1) Unit 3 square together, top to bottom and in that order, to make the Left Side Border (Fig. 8).

7. Sew (1) Unit 1 square, (1) 5 1/2" Fabric C square, (1) Unit 2 square, (1) 5 1/2" Fabric C square, (1) Unit 3 square, (1) 5 1/2" Fabric C square, (1) Unit 1 square, (1) 5 1/2" Fabric C square and (1) Unit 2 square together, top to bottom and in that order, to make the Right Side Border (Fig. 9).

Left Side  
Border

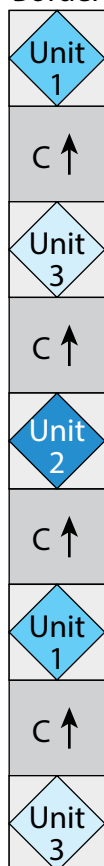


Fig. 8

Right Side  
Border

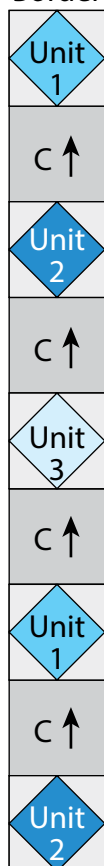


Fig. 9

8. Sew (1) 5 1/2" Fabric C square, (1) Unit 1 square, (1) 5 1/2" Fabric C square, (1) Unit 2 square, (1) 5 1/2" Fabric C square, (1) Unit 3 square and (1) 5 1/2" Fabric C square together in that order to make the Top Border (Fig. 10).

Top Border

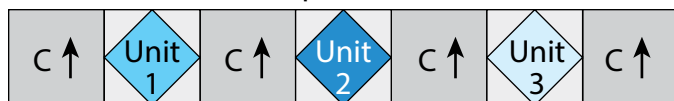


Fig. 10

9. Sew (1) 5 1/2" Fabric C square, (1) Unit 2 square, (1) 5 1/2" Fabric C square, (1) Unit 1 square, (1) 5 1/2" Fabric C square, (1) Unit 3 square and (1) 5 1/2" Fabric C square together in that order to make the Bottom Border (Fig. 11).

Bottom Border

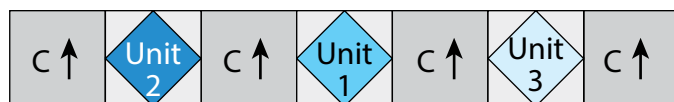


Fig. 11

### Quilt Top Assembly

(Follow the Quilt Layout while assembling the quilt top.)

10. Sew the Side, Top and Bottom Borders to the Center Block.

11. Sew (1) 1 1/2" x 55 1/2" Fabric B strip to each side of the Center Block. Sew (1) 1 1/2" x 37 1/2" Fabric B strip to the top and to the bottom of the Center Block.

12. Center (1) 5" x 70" Fabric G strip on (1) side of the Center Block and pin in place. Start sewing the strip a 1/4" from the top edge of the block and stop a 1/4" from the bottom edge. **DO NOT TRIM THE EXCESS.** Repeat with the opposite side.

13. Repeat Step 12 to sew (1) 5" x 50" Fabric G strip to the top and to the bottom of the Center Block, making sure to stop and start 1/4" away from each end of the block. To miter each corner, fold the Center Block on a diagonal, wrong side together. This should line up the strips from adjacent sides (Fig. 12).

14. Starting at the sewn seam (represented by the arrow in Figure 12), draw a 45-degree line to the edge of the fabric. Sew on the drawn line. Trim the excess fabric leaving a 1/4" seam. Repeat this step with the remaining corners to make the quilt top.

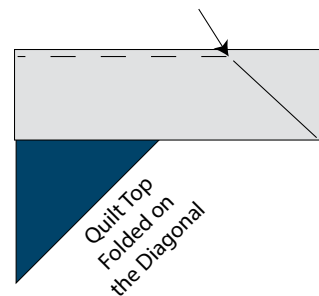
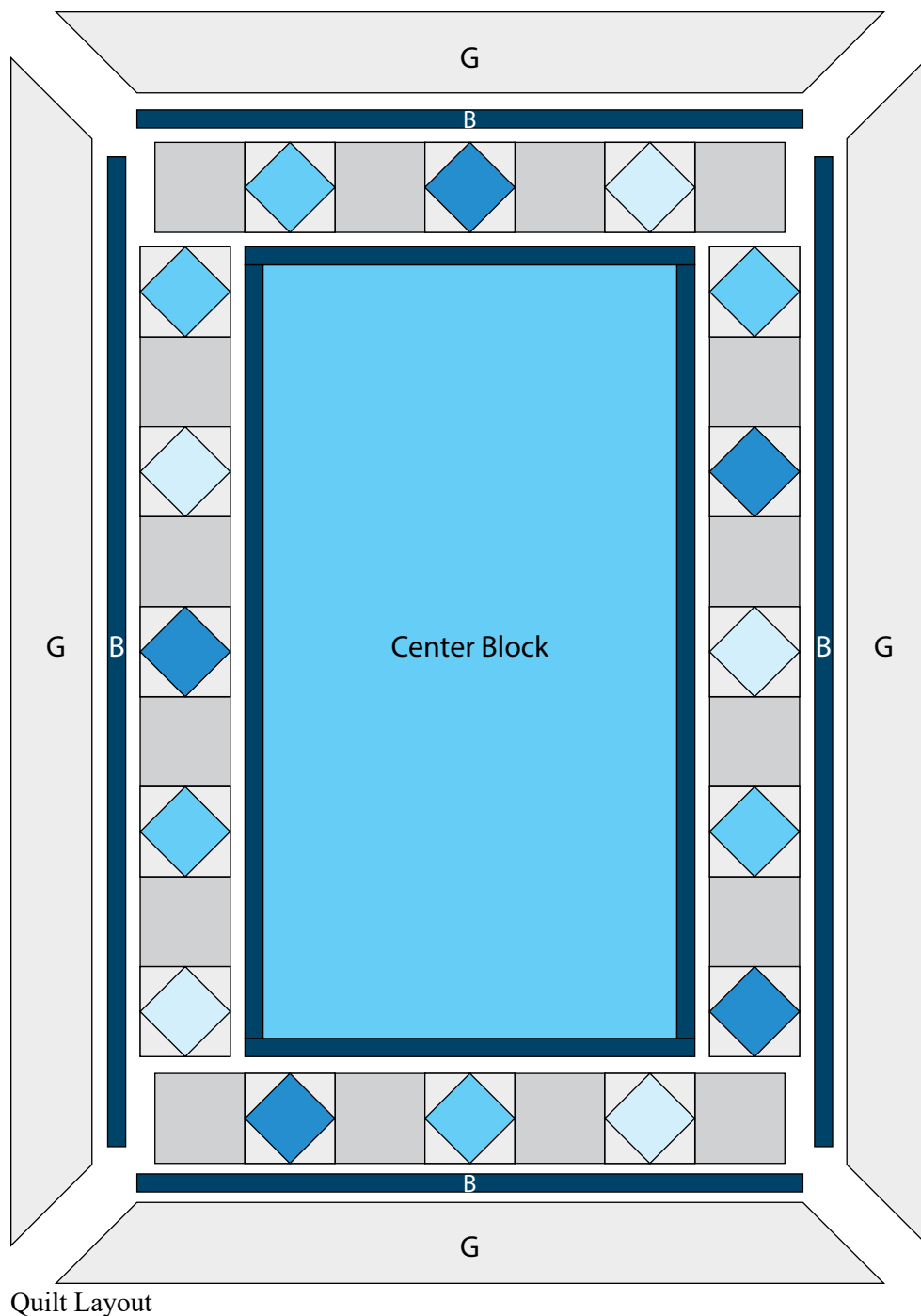


Fig. 12

15. Layer and quilt as desired.

16. Sew the (6) 2 1/2" x WOF Fabric B strips together, end to end with 45-degree seams, to make the binding. Fold this long strip in half lengthwise with wrong sides together and press.

17. Bind as desired.



Every effort has been made to ensure that all projects are error free. All the information is presented in good faith, however no warranty can be given nor results guaranteed as we have no control over the execution of instructions. Therefore, we assume no responsibility for the use of this information or damages that may occur as a result. When errors are brought to our attention, we make every effort to correct and post a revision as soon as possible. Please make sure to check [www.blankquilting.net](http://www.blankquilting.net) for pattern updates prior to starting the project. We also recommend that you test the project prior to cutting for kits. Finally, all free projects are intended to remain free to you and are **not for resale**.